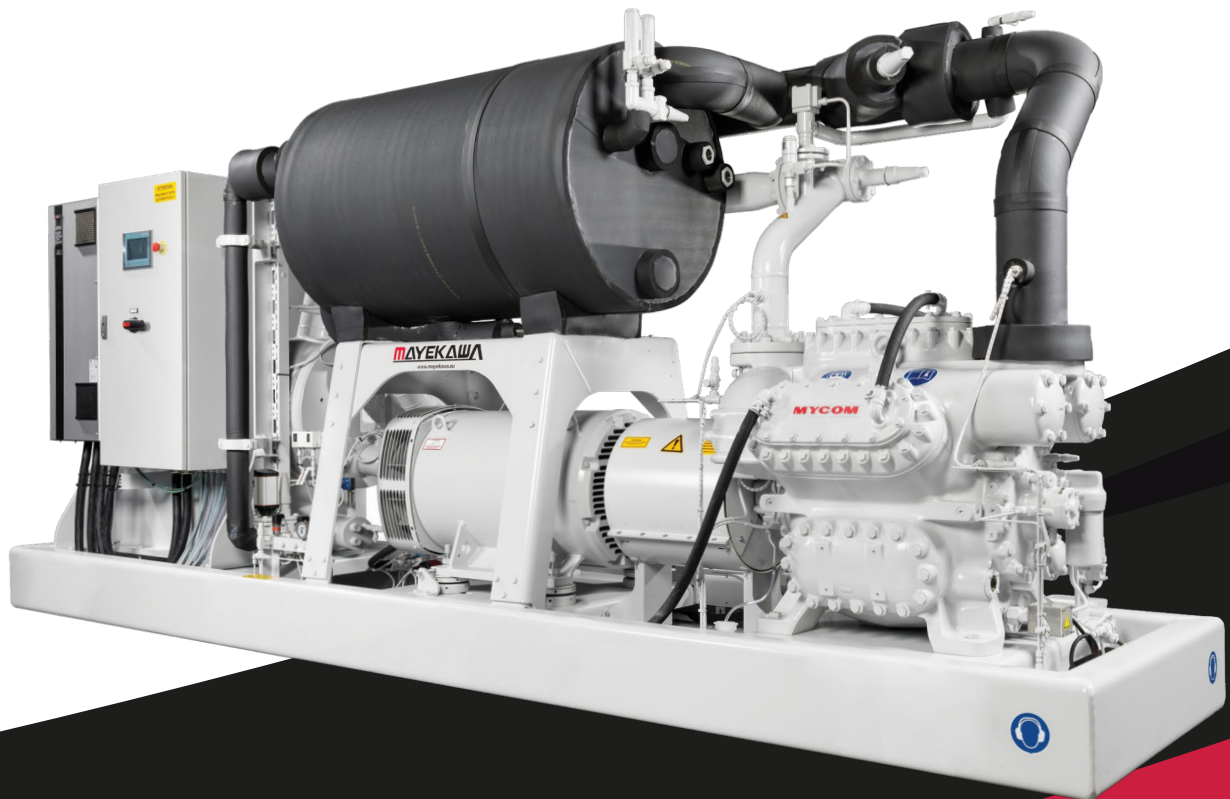


# FUGU

Low-Charge  
Ammonia Chiller

**MAYEKAWA**  
**MYCOM**



**Water-cooled**

<https://americas.mayekawa.com/mna>

# FUGU Water-Cooled Ammonia Chiller

Natural refrigerant, very low charge

## ADVANTAGES

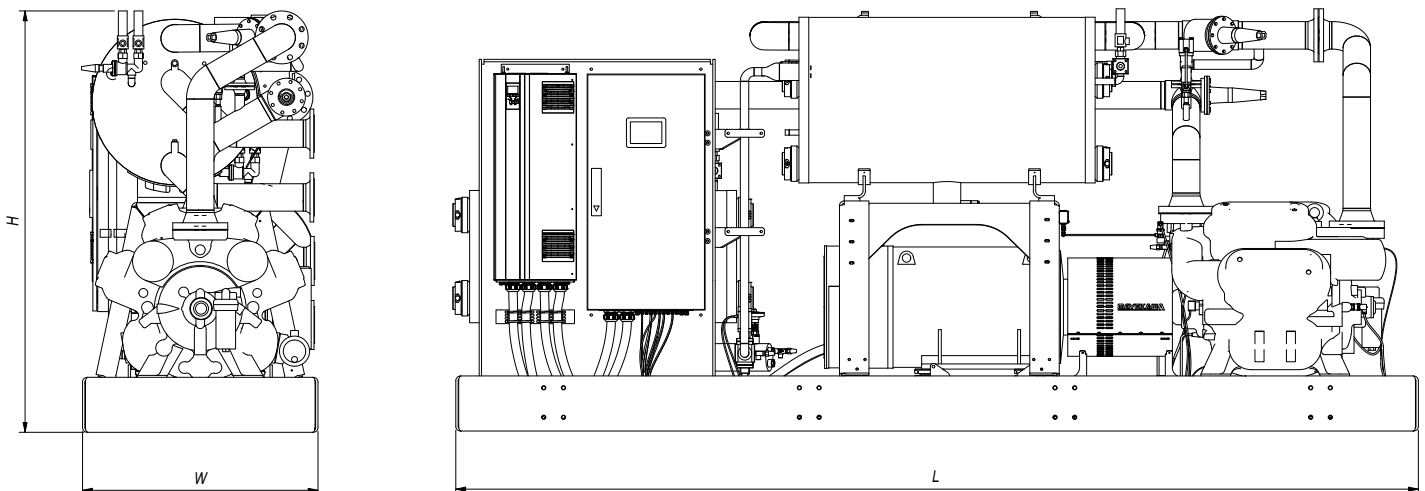
- Plug-and-play design
- Compact overall dimensions for space saving
- Plate shell evaporator and condenser hold small charge of ammonia (no separate suction accumulator)
- M-series reciprocating compressor keep better efficiency than screw compressors in both full and part-load conditions
- Combination of VFD and step capacity control provide smooth response to constantly changing demands

## APPLICATIONS

- Process cooling
- Beverages
- Dairy products
- Bakery
- Plastics
- District cooling/heating

## DIMENSIONS & SPECIFICATIONS

Dimensions are for reference only. Please contact MYCOM for more detailed drawings.



mChILLER model	FUGU 1280R	FUGU 960R	FUGU 640R
Cooling side connections	(2) x 4 inch	(2) x 4 inch	(2) x 3 inch
Heat rejection side connections	(2) x 4 inch	(2) x 4 inch	(2) x 3 inch
Length (L)	193 inch	193 inch	193 inch
Width (W)	48 inch	48 inch	48 inch
Height (H)	84.5 inch	84.5 inch	77.5 inch
Dry weight	19,290 lbs.	18,188 lbs.	15,212 lbs.

\*Values are to be considered as guidance and will be finally confirmed in the quotation process.

# TECHNICAL DATA

Capacity according to EN12900.

General	FUGU 1280R		FUGU 960R		FUGU 640R	
<b>Package type:</b>	Water-cooled chiller	Water-cooled chiller	Water-cooled chiller	Water-cooled chiller	Water-cooled chiller	Water-cooled chiller
<b>Refrigerant/charge:</b>	R717 / 176 lbs.	R717 / 176 lbs.	R717 / 176 lbs.	R717 / 176 lbs.	R717 / 122 lbs.	R717 / 122 lbs.
<b>Total part load:</b>	11.0-100 %	11.0-100 %	14.5-100 %	14.5-100 %	21.5-100 %	21.5-100 %
<b>Cooling capacity:</b>	387 TR	234 TR	293 TR	175 TR	194 TR	113 TR
<b>Condenser capacity:</b>	5442.4 kBtu	3497.4 kBtu	4104.8 kBtu	2623.9 kBtu	2726.3 kBtu	1702.7 kBtu
<b>Shaft power:</b>	309.4 BHP	272.2 BHP	229.7 BHP	205.2 BHP	154.2 BHP	135.4 BHP
<b>EER(chiller):</b>	5.57 (-)	3.81 (-)	5.67 (-)	3.79 (-)	5.60 (-)	3.71 (-)
<b>COP(chiller):</b>	6.92 (-)	5.05 (-)	7.02 (-)	5.03 (-)	6.95 (-)	4.94 (-)
<b>Evaporator</b>						
<b>Secondary medie:</b>	WATER	MEG-30.0 %	WATER	MEG-30.0 %	WATER	MEG-30.0 %
<b>Secondary inlet:</b>	53.6 °F	32.0 °F	53.6 °F	32.0 °F	53.6 °F	32.0 °F
<b>Secondary outlet:</b>	44.6 °F	23.0 °F	44.6 °F	23.0 °F	44.6 °F	23.0 °F
<b>Flow:</b>	1,030 GPM	506 GPM	779 GPM	511 GPM	515 GPM	330 GPM
<b>Condenser</b>						
<b>Secondary medie:</b>	WATER	WATER	WATER	WATER	WATER	WATER
<b>Secondary inlet:</b>	86.0 °F	86.0 °F	86.0 °F	86.0 °F	86.0 °F	86.0 °F
<b>Secondary outlet:</b>	95.0 °F	95.0 °F	95.0 °F	95.0 °F	95.0 °F	95.0 °F
<b>Flow:</b>	1,215 GPM	779 GPM	916 GPM	585 GPM	607 GPM	379 GPM
<b>Electrical</b>						
<b>System grounding:</b>	TN-C-S	TN-C-S	TN-C-S	TN-C-S	TN-C-S	TN-C-S
<b>Package rated voltage:</b>	460/3/60 VAC	460/3/60 VAC	460/3/60 VAC	460/3/60 VAC	460/3/60 VAC	460/3/60 VAC
<b>Package rated current (MCA):</b>	452A	400A	340A	302A	236A	205A
<b>IK Max.:</b>	25kA	25kA	25kA	25kA	25kA	25kA
<b>Maximum fuse (MOCP):</b>	800A	700A	600A	600A	500A	400A
<b>Communication type:</b>	MODBUS TCP/IP, PROFINET	MODBUS TCP/IP, PROFINET	MODBUS TCP/IP, PROFINET	MODBUS TCP/IP, PROFINET	MODBUS TCP/IP, PROFINET	MODBUS TCP/IP, PROFINET

MAYEKAWA USA, INC.  
<https://americas.mayekawa.com/mna>

Tel: +1 (832) 975-0975  
 24 Hr Service: +1 (800) 836-9266  
 Email: [info@mayekawausa.com](mailto:info@mayekawausa.com)

\* The information contained herein is for reference only. Subject to change without notice.

