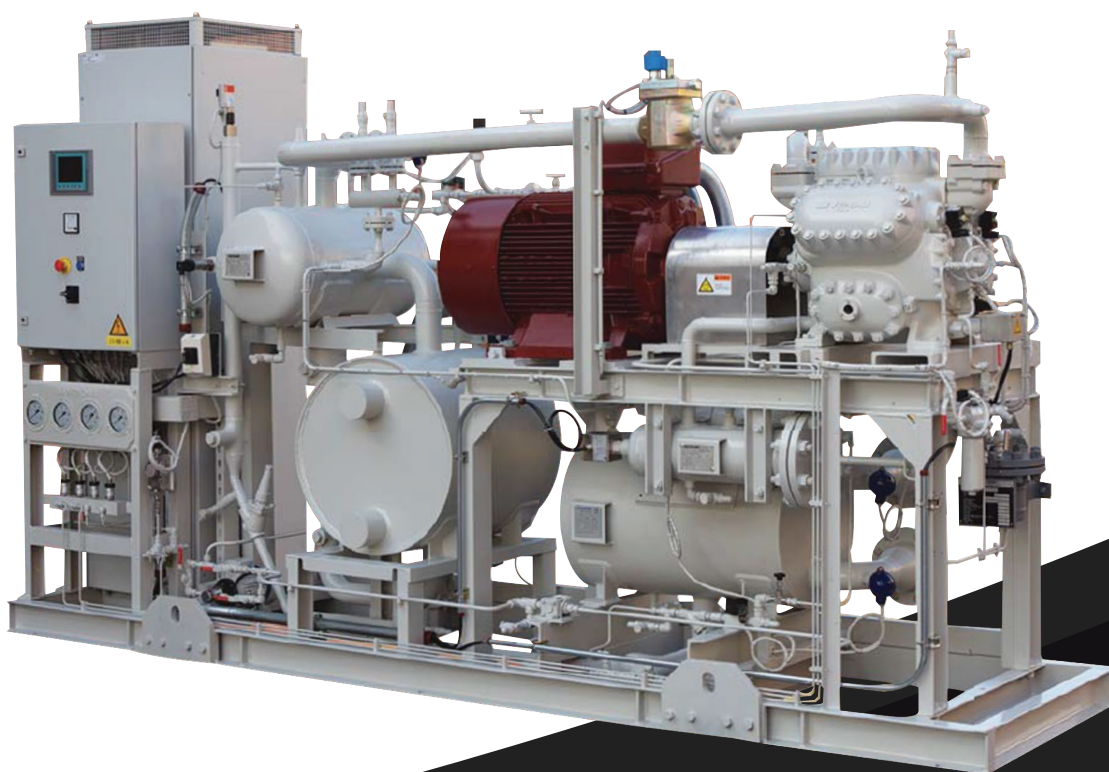


PLUS+HEAT

NH₃ Heat Pump

MAYEKAWA
MYCOM



PLUS+ Heat
Ammonia Heat Pump

<https://americas.mayekawa.com/mna>

Plus+ Heat NH3 Water Source Heat Pump

Natural refrigerant, reuses wasted heat

ADVANTAGES

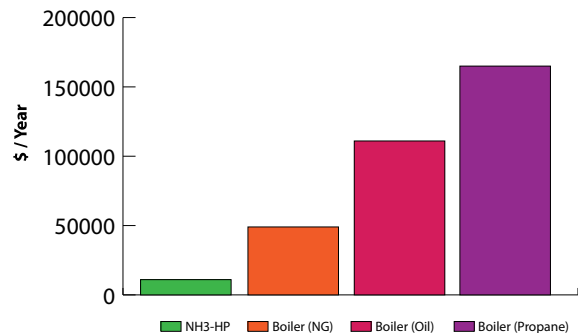
- Cost effective waste heat recovery
- Employs natural refrigerant, environmentally friendly
- Low operational costs and easy maintenance
- Compatible with both screw and reciprocating compressors

APPLICATIONS

- Beverage plant
- Food processing plant
- Meat processing plant
- Automobile and parts plant
- Semiconductor plant
- Chemical plant

YEARLY COST COMPARISON

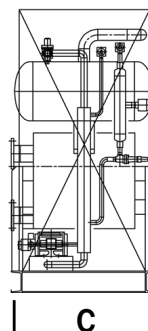
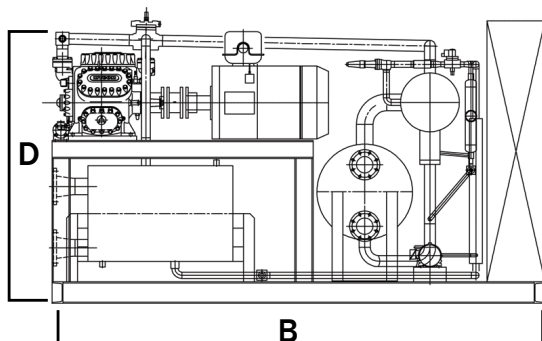
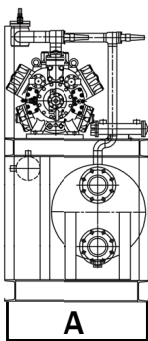
- When:
- \$10 hour/day, 300 days/year
 - Supply hot water 176 °F
 - Boiler efficiency 85%
 - 0.06 \$/kWh (Electricity)
 - 0.05 \$/m³ (Ng)
 - 1.0 \$/L (Oil)
 - 0.86 \$/L (Propane)



DIMENSIONS & SPECIFICATIONS

Dimensions are for reference only. Please contact MYCOM for more detailed drawings.

| | |
|------------------|--|
| Compressor | 725PSI / 5.0MPa reciprocating type 6HK |
| Capacity control | 100 - 20% flexible control with WFD |
| Motor | 100 - 175HP / 75 - 130kW X 4P with VFD |
| Power supply | Main: 575 (460) V60Hz / Control: 220V50Hz |
| Condenser | Shell and plate |
| Evaporator | Shell and plate |
| Refrigerant | R717 (NH3) (charged: 155lb / 70kg) |
| Lubricant oil | Mineral oil (charged: 5.3 gal / 20L) |
| Net weight | 7,940lb / 3,600kg |
| Size [ft(mm)] | L 11.8 (3,600) x W 3.3 (1,000) x H 7.2 (2,200) |



| | | |
|---|----------|---------|
| A | 1,000 mm | 3.3 ft |
| B | 3,400 mm | 11.8 ft |
| C | 1,000 mm | 3.3 ft |
| D | 2,000 mm | 7.2 ft |

*Dimensions shown for N6HK Reciprocating Compressor Package.

MAYEKAWA USA, INC.
<https://americas.mayekawa.com/mna>

Tel: +1 (615) 773-2859
 24 Hr Service: +1 (800) 836-9266
 Email: info@mayekawausa.com

* The information contained herein is for reference only. Subject to change without notice.

MAYEKAWA
MYCOM